

Exhibit D: Coaledo Drainage District Tide Gate Replacement and Beaver Slough Fish Passage Project Site Fencing Details

D-1. Fencing Detail

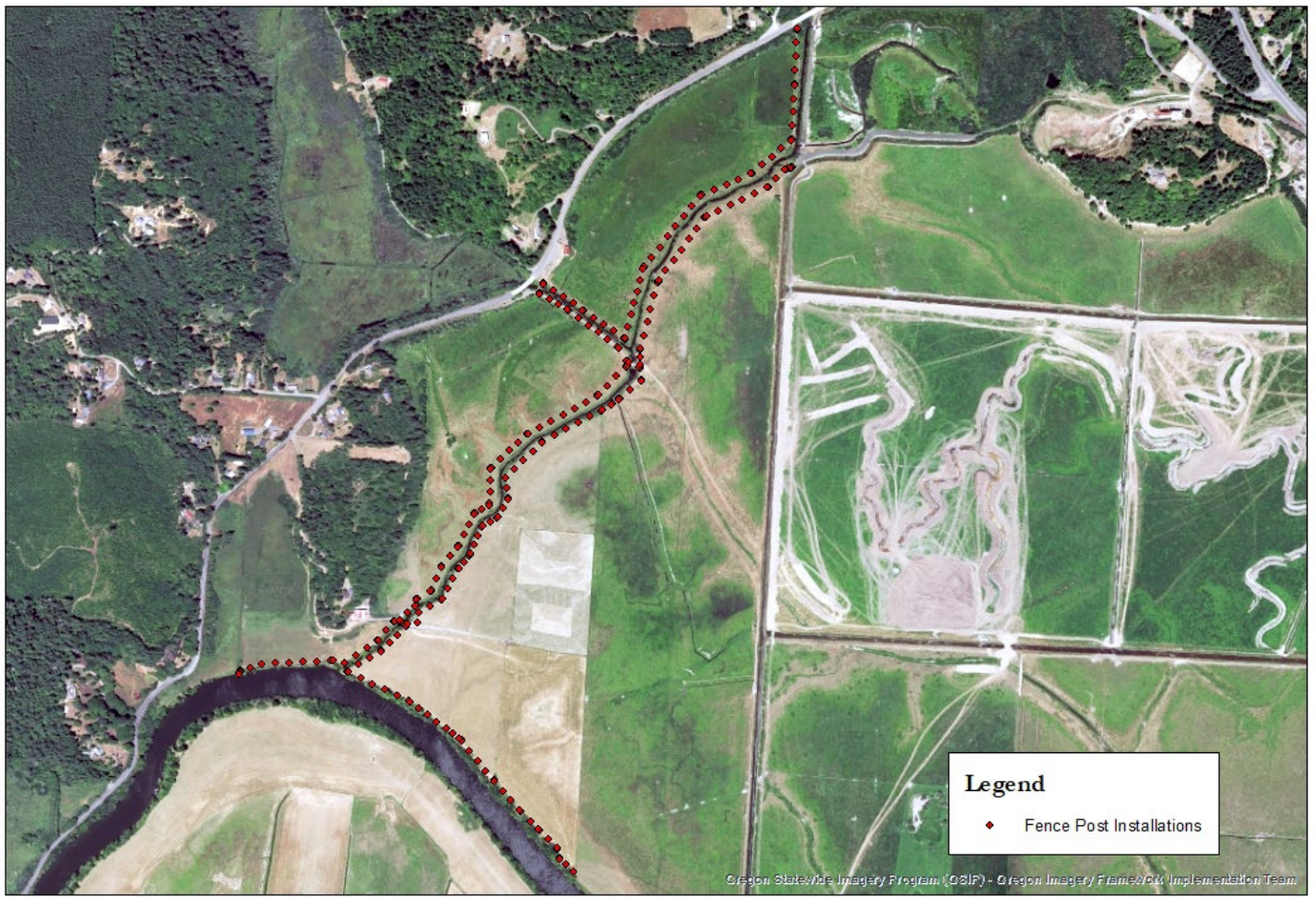
Fencing can begin as early as September 1, 2023, depending on completion of site preparation. Six-inch treated wooden posts will be spaced 100 feet apart across approximately 16,900' of proposed fence line, pushed in with an excavator, and secured with concrete (See Figure 1 for Fence Post Location Map). 11,085' of wildlife-friendly livestock exclusion fencing will be installed to a portion of the project (See Figure 2 for Upper Landowner Fencing Map). Fencing materials required for fencing actions occurring within this bid will be sourced and delivered by the contractor. Each fencing site has site-specific needs described as follows:

Upper Site: Install 11,085' of wildlife-friendly livestock exclusion fencing using 8-foot-long, 6-inch diameter treated wooden posts for every 100 ft of fencing, (see Figure 2 for Upper Landowner Fencing Map). The spacing will consist of a galvanized t-post every 10'. Fences are to be designed with standard NRCS specifications (Conservation Practice 382, 382AA OR – Specification, January 2019) and ODFW approved wildlife-friendly 4-strand barbed wire fence (See Exhibits D-2 for technical specifications for fencing). Designs will include a 4-strand barbed-wire fence that is spaced as follows:

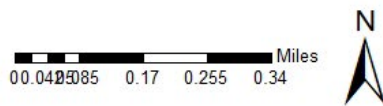
First strand: 16" from the bottom
Second strand: 6" from the first strand
Third: 8" from the second strand
Fourth: 12" minimum from the third

These plans will also incorporate 10 galvanized 6-rail, 6' access gates placed at strategic locations in the fence line.


Lower Site: The landowner will mark the location of all wooden posts. Posts will be installed by the contractor, with the exception of posts that will support each gate (posts will be clearly marked as a guide for installation). The landowner will be responsible for installing the wooden posts supporting each gate, the gates, and the barbed wire; and building any necessary braces.



**Coaledo Drainage District
Tide Gate Replacement and
Beaver Slough Fish Passage Project
- Fence Post Map**



Created by: Anna Pfeifer
Date: November 2022



**Coquille
Watershed
Association**

Figure1 Coaledo Fence Post Location Map



Coaledo Drainage District Tidegate Replacement and Fish Passage Project - Fencing Map

Figure 2 Upper Landowner Fencing Map